



Welcome to the summer edition of **Community Link**. If you would like to send any articles or information for the next newsletter (Sept 2008 edition) or if you would prefer an electronic copy of the newsletter, please contact me on **01454 868726**, or email: [steph@chasekingsforestcp.org.uk](mailto:steph@chasekingsforestcp.org.uk). The deadline for articles is September 1st, 2008. Thank you. Steph Bengry-Howell, Community Development Worker. TC&KFCP, Kingswood Foundation Estate, Britannia Road, Kingswood. BS15 8DB.

## News

### Newsletter Responses

Back in January we sent out a questionnaire asking people what they thought about the newsletter. These are some of the results:

#### Most useful parts of the newsletter

<u>% of respondents</u>	<u>most useful part</u>
81%	funding information
58%	news/activities from other groups
27%	training information
15%	the whole newsletter
8%	finding contacts for networking
4%	informing others of new initiatives
	volunteer opportunities

#### Improvements that could be made

35% of respondents said the newsletter was fine as it is.

#### Suggested Improvements

<u>% of respondents</u>	<u>Improvement suggested</u>
15%	more pictures
8%	more funding information
8%	option to receive via email/as a pdf file
8%	success stories/testimonies/updates from groups

#### Other improvements suggested:

It could be more accessible to people with disabilities; perhaps some definite advice on "how to be a good secretary/treasurer/fund-raiser etc.", how to advertise, etc.; encourage groups to network; include results from community consultations; include sections from service users as well as from projects; visit groups to see what they are doing & take photos for the newsletter for other groups to see; list addresses where people might go for things they require e.g. woodchip for paths, plant hire etc.; more of the same.

**Questions were also asked about our project: how many people we employ, the area we cover, etc.**

So here is a quick overview:

The Chase & Kings Forest Community Project covers two of South Gloucestershire Council's Area Forum areas bounded to the north and south by the M4 motorway and the River Avon, and by the boundaries with Bristol to the west and Wiltshire to the east. The major districts and towns within that area include Kingswood, Staple Hill, Downend, Hanham, Parkwall, Longwell Green, Oldland Common, Bitton, Emerson's Green, Mangotsfield, Warmley, Pucklechurch, Wick and Marshfield.

We have a small Management Committee and at present, employ one part time member of staff. We aim to advise, support and assist local community-based voluntary organisations working for the benefit of people in the aforementioned areas of South Gloucestershire. We do this by

- Offering advice and information on organisational issues (governing documents, policies, running effective management committees, action planning)
- Providing a newsletter
- Providing 1 to 1 support to small or newly formed groups in Priority Neighbourhoods (Kingswood, Staple Hill, Cadbury Heath)
- Providing training or signposting to training
- Providing funding advice & information:
  - via our newsletter and a monthly funding update
  - groups can book an appointment to search our funding database
  - by supporting small/new groups in Priority Neighbourhoods who have little or no experience of fundraising, with applications.
- Providing representation at steering groups, network meetings.

We work in partnership with CVS South Gloucestershire, Volunteer Centres South Gloucestershire and South Gloucestershire Community Engagement Team.

**Use of Grants Online**

If you would like to search Grants Online (a funding database) to find potential funders for your group, then do let me know. We can make an appointment for you to visit the office. This service is **free** to groups.

Call Steph on **01454 868726**, or make an appointment by email:

[steph@chasekingsforestcp.org.uk](mailto:steph@chasekingsforestcp.org.uk)

**Funding Update**

If you would like to receive a funding update by email then let me know, by email or on the above number. These were initially intended to be monthly but tend to be six-weekly.

## **Kingsmeadow Community Flat Fun Day 19 Barrington Close, Kingswood**

Rudi Springer, Pat Apps and Bill Bowery, as local Labour councillors, worked hard with local residents to establish a community flat. This is now up and running.

The community flat can be used by anyone in the community - it belongs to the people, so if you have a voice **yell** and let the committee know how you would like to see the flat work for you.

**A fun day** is being held on: **June 21<sup>st</sup> 2008**  
10am – 4pm

with music, food and free entertainment for all the family, including:

<b>10.00 am.</b>	<b>“DELBOY” Your DJ for the day.</b>
<b>10.30 am.</b>	<b>Official Opening—Dr.Roger Berry MP</b>
<b>10.45 am</b>	<b>Black Panthers</b>
<b>11 am</b>	<b>Fun Machine</b>
<b>11.30 am</b>	<b>Demonstration—Tae Kwando—</b>
<b>11.50 am</b>	<b>Boxing skills.</b>
<b>12.15 pm</b>	<b>Anna’s lady Belly Dancers display</b>
<b>1 pm</b>	<b>Fancy Dress Parade &amp; Judging</b>
<b>2pm</b>	<b>Circomedia Circus Skills.</b>
<b>2.30 pm</b>	<b>Presentation of Fancy Dress Prizes</b>
<b>2.45 pm</b>	<b>Music</b>

Activities throughout the day include games with the Play Rangers, face painting, and a bouncy castle. You can book a **free massage** with Liz Jones: 1pm -3pm, or book a **free nail treatment** with Nadine 11am-2 pm.

The day is an opportunity for people to look around the community flat and ask questions, sign up to join or help with free fun classes and to let the management committee know what they would like from the flat. This could be summer play schemes, after school clubs, speakers on healthy eating...

Free activities planned for the future are baby massage courses with Liz, easy walk classes with Alex Hayes, Help your child with Language & Literacy, Have Fun with Numbers with Your Child, Getting started –Working with Children, Come with your friends and make a “Story Book”, and short courses: Creating Confidence, Brush up on your English, and Introduction to Computer Skills with Don Jenkins. People can sign up for these activities at the fun day.

The fun day is being supported by Knightstone Housing and South Glos. Council.

**FFI:** call Di on **0117 9098275**



**Charlotte Gay** reports on last year's Youth 4 Youth event:

Youth4Youth - ch-ch-ch-check it out!

[www.youth4youth.co.uk](http://www.youth4youth.co.uk)

Imagine a whole day jam-packed with:  
FREE workshops    FREE bands    Even FREE glow sticks.... .But how?

All the way back in December 2006 a group of enthusiastic teenagers from Kingswood Foundation and Ten Sing conceived what appeared to be a very simple plan....

To organise and host an event BY young people - FOR young people.

More specifically an arts and music festival at no cost to its visitors. (As well as something fun to do on a Sunday!)

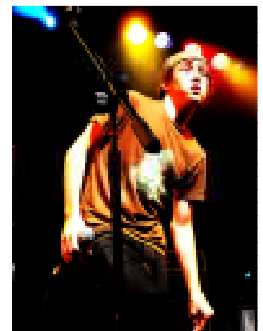
More importantly though, Youth4Youth wanted to present younger members of the community in a positive light...as opposed to the negative images of young people often illustrated by the media.

It was originally anticipated a few hundred pounds would be raised (maybe a thousand or so) to fund the project.

Instead a whopping thirty-six thousand pounds was successfully obtained from several local charitable trust funds such as Bristol Youth Opportunity Fund, South Gloucestershire 'the Big Stash' and 'The Scarman Trust Fund.'

This small-scale project was growing at both a surprising and remarkable rate; with an escalating number of young people volunteering to assist. With over 20 acts confirmed to perform on a professional forty-five foot stage, including radio presenters 'Bush & Troy', Pauline and the GWR Dancers, Thunders and pop star 'Lil Chris,' hopes were high for a fantastic day.

Fortunately, the committee were not to be disappointed and months of hard work were about to pay off....





The variety of workshops enabled everyone to get involved and try something a little bit different; activities on offer included Irish and Street dancing, Voice / Singing, African and Bhangra drumming and Brazilian football and spray art.

Those performing were provided with the unique opportunity not just to showcase their talents and produce a highly enjoyable show... but also build their own confidence; the results of which were extremely rewarding.

Neither the cold, the rain, the wind (or all three combined!) could dampen the spirits of the audience. In fact, everyone seemed to really enjoy themselves; including all of the organisers, stewards and performers. One person even described youth4youth as the 'best day of their life.' Can't argue with that can you!?

What's more, youth4youth is far from over. Applications for funding over the next three years are already in progress and young people are meeting and planning.

So hopefully with a little bit of luck, and a LOT of hard work, Youth4Youth will return bigger and better than ever!

## Youth 4 Youth 2008 **NEW DATE! NEW SITE!**

September 13th 2008

The Kingswood Foundation

Major Youth Arts Festival

For More information visit our new site: [www.youth4youth.co.uk](http://www.youth4youth.co.uk)

---

## Premix

Leading up to the main Youth 4 Youth event, we are hosting some pre-mix nights, showcasing young local youth artists to give a taste of things to come, at Kingswood Foundation. The event is free, you just need to turn up and bring some friends! Sweets and drinks will also be available!

More details at: [www.youth4youth.co.uk](http://www.youth4youth.co.uk)



## Get your running shoes on and join Team Jessie May in 2008

Join team Jessie May in the fantastic **Bristol Half Marathon** on **Sunday 14<sup>th</sup> September 2008**. Reserve your gold bond place now!

The Jessie May Trust is a Bristol based charity that provides a 'hospice at home' service for terminally ill children in the local area. Through providing emotional and practical support to children and their families, The Jessie May Trust helps families make the most of the Precious Time they have together.

Since January 2007, The Jessie May Trust has been raising money for its Precious Time Appeal. This is an appeal with the vision to provide an increased level of support to every family in the local area caring for a terminally ill child.

By running as part of team Jessie May, runners will receive a free fundraising pack, a Jessie May running vest and training and fundraising support from the Jessie may fundraising team.

Help The Jessie May Trust smash their appeal target as they enter into the last year of the Precious Time Appeal; help change the lives of local families.

For more details or to reserve your place, please call Kate on 0117 961 6840 or e-mail to [kate.buddery@jessiemaytrust.org.uk](mailto:kate.buddery@jessiemaytrust.org.uk).



**By Sarah Thomas, at the Alzheimer's Society**

**Join our campaign to end the current system of charging for care**

Hundreds of Society campaigners will join branches of the Society in local and regional protest marches across the country on **20 June 2008** in support for our campaign to end the current system of charging for care.

**Why are we protesting?**

Alzheimer's Society has argued for many years that the current system of charging for care is unfair and discriminates against people with dementia. Thousands of people with dementia and carers pay substantial amounts towards care that they need. This essential care, which is a lifeline to so many, includes help with washing, eating and using the toilet. The current system penalises people with dementia more than people with other conditions because the majority of the care they receive is classed as 'social care' and this is means tested. Alzheimer's Society is campaigning for a new funding system that delivers a better deal for people with dementia and more fairly shares the cost of care between individuals and the state. It is also vital that any new system improves quality of care.

We have consistently lobbied politicians on this issue and our perseverance has been rewarded. The Government has agreed to take a radical look at the current system by publishing a Green paper (also known as a consultation paper) setting out options for reform. However, the Society will be one of many organisations fighting to be acknowledged in the Green Paper.

**How to get involved**

Contact your local branch of the Society (or visit the website) to find out what they are planning on 20<sup>th</sup> June; ask to meet with your MP on 20<sup>th</sup> June; write to your MP. A template letter can be downloaded from the website. For more information on how to contact your MP visit the website or telephone **020 7423 3585**.

**Share With A Carer** - a new service for carers.

Evenings and weekends can be the loneliest times for carers, when they are most in need of someone to talk to. But the professionals have gone home, and sometimes it appears that friends and family have too many worries of their own.

**The Carers Centre** has launched a new evening and weekend **telephone support service for carers** to call – a listening ear for carers. The service is called 'Share with a Carer' and has already been well used since its start at the end of 2007. Trained volunteer **support workers** are available **every evening from 6pm till 10pm, including bank holidays**.

Volunteers have been selected for their empathy and non-judgemental approach. **0117 958 9906** is a central number giving you the information on which volunteers are available each evening. Volunteers are on mobile phones but will offer to ring you back to save your phone bill.

## Events



**Read More...Live More**

**2008 is the National Year of Reading!**

**Whether it's film scripts or newspapers, sci-fi or song lyrics, we want to get everyone reading more. Take up the challenge, what will you do?**

South Gloucestershire Libraries, including Cadbury Heath, are planning a stimulating programme of activities for all ages throughout the year to get people excited about reading and books. Why not join the library this month with your family and friends, or share your favourite childhood stories with your own children or grandchildren and find out what they enjoy reading? Or perhaps make this the year to read that book you've always wanted to but never quite got round to!

Libraries are a great place for finding that next gripping read, but there is also so much more to discover:

CDs and DVDs that you can hire for a whole week instead of just overnight; large print and talking books; free access to the internet including online newspapers and *Ancestry* – the essential resource for tracing your family tree; *enquire*: round –the-clock online access to an information service from library professionals; activities for all ages; advice surgeries.

So why not join us and discover just how much reading can help you live more: **Cadbury Heath Library, in School Road, Cadbury Heath.**

We're open: Mondays 9am – 7pm, Thursdays and Fridays 9am – 5pm, Saturdays 9.30am – 5pm. To contact the library call: **01454 868006**. For more details and information about what is on in South Gloucestershire libraries, see the website at [www.southglos.gov.uk/libraries](http://www.southglos.gov.uk/libraries) or pop in.

---

### **Downend Bike Ride: Saturday, 14<sup>th</sup> June 2008**

As part of the National Bike Week events Downend & Bromley Heath Parish Council are organising a family cycle ride from **Downend to Kingswood Heritage Museum. Leaving Downend** (outside Motaman) at **2pm, returning** for about **5.15pm**. Return distance is about 5 miles. The museum is based at the site of an 18<sup>th</sup> century zinc and brass works, and houses many items of interest to children and adults. There will be a cycle display on the day of this event. Admission to the museum £1. Refreshments available.

An **alternative starting point** is available at **Page Park** (South View) at **2.10pm**. Most of the route is away from motor traffic, and is suitable for children. (Under 16s must be accompanied by an adult). Please ensure bikes are checked and roadworthy before the ride. For more information, call: **0117 9567001**.

---

**Volunteer Fair: Thursday June 19th 9am-1pm**  
St Mary Shopping Centre, Thornbury

Stalls, live music, display of photographic competition entries. To reserve a table at the Fair please **contact** Thornbury Volunteer Centre office on **01454 413392**. There will be no charge but places are limited and will be allocated on a first come first served basis.

---

### **Archaeology in The Park 2008 – Sunday July 20th 2008**

Warmley Gardens at Kingswood Heritage Museum, 10.30am – 4pm  
Ever wanted to find out about archaeology in your area? Then go along to this free event as part of National Archaeology Week. This event is 1 of 4 in the region.

**FFI:** contact Melissa Barnett, Museums & Heritage Officer on: **01454 865783**

---

### **Planning For Real Consultation: Kingswood**

Following the Prioritisation Event in April, themed stakeholder meetings to solidify actions are planned:

- **Crime & Safety** Meeting – **June 24th 2008**, Council Chambers, Civic Centre
- **Work, Training & Local Economy** Meeting – **July 9th 2008**, Park Centre
- **Traffic & Transport** Meeting – September 2008

**FFI:** Call Karen Whitaker, Community Engagement Officer, South Gloucestershire Council on: **01454 868 127**, or email: [karen.whitaker@southglos.gov.uk](mailto:karen.whitaker@southglos.gov.uk)

---

**Kingswood Safer & Stronger Group** meeting – **June 26th, 7pm**, Council Chambers, Kingswood Civic Offices

<b>Training</b>
-----------------

**June 12th**      **“Employment Law – for those working with Children and Young People”**. For anyone working within the Children and Young People sector.

**June 18th**      **Supervision Skills for Managers and Team Leaders**  
9.30am–4pm To gain a better understanding of your role when supervising staff or volunteers. **The Park Centre, High Street, Kingswood. BS15 4AR**

**June 26th**      **Managing your Organisation Financially**  
9.30am – 3.30pm Useful for anyone who needs to read and understand accounts, whether as a paid staff member or as a trustee/management committee member. **Turnberries Community Building, Bath Road, Thornbury. BS35 2BB**

Cost: **Free to CVS Members**, Non CVS Members £25. Lunch will be provided.

**FFI or to book**, contact Sarah Buckle at CVS South Gloucestershire on: **01454 868729** or email: [trainingdev@cvs-sg.org.uk](mailto:trainingdev@cvs-sg.org.uk)

## Funding news

### South Gloucestershire Council Community Grants: Capital Grants

Capital Grant applications are now being accepted. Capital grants are available to support voluntary and community groups' capital projects, such as buying or enhancing land; buying, constructing or enhancing buildings; or buying, installing or replacing plant, machinery, apparatus and vehicles. Funding is available for smaller projects costing no more than £3,000 in total. Restrictions for groups within The Chase and Kings Forest Forum areas are: applications will not be considered from Town and Parish Councils, schools or associated organisations.

The **closing date** for applications is **23rd June 2008**.

**FFI:** and to apply online, visit: [www.southglos.gov.uk](http://www.southglos.gov.uk) then click on community engagement (under c) and capital grant online application,

Call the **grants helpline** on: **01454 865865**, or e-mail:

[capitalgrants@southglos.gov.uk](mailto:capitalgrants@southglos.gov.uk)

### Changing Spaces - Local Food Programme

Local Food, a new grants programme funded by the Big Lottery Fund, opened for applications on 17 March 2008. The £50 million programme aimed at making locally grown food accessible and affordable to local communities has been developed by a consortium of organisations, and is managed on their behalf by the Royal Society of Wildlife Trusts (RSWT).

Grants from £2,000 up to £500,000 will be available to not-for-profit groups and organisations in England (with a proven track record), delivering such projects as growing, processing, marketing and distributing local food; composting and raising awareness of the benefits of such activities. There are three levels of funding available through Local Food: **Small grants (£2,000 - £10,000)**; **Main grants (£10,001 - £300,000)**; and **Beacon grants (£300,001 - £500,000)**. There is a two stage application process: **First Stage Application:** A simple open application process for projects to outline their proposals and to ensure eligibility. Visit the *Is your project eligible?* page for further details on eligibility.

**Full Application:** All eligible projects will be invited to submit a Full Application. If you are not invited to submit a Full Application an explanation will be given.

There is a rolling programme for the Small and Main grants so there are no deadlines, - although **all funded projects** must be **completed by March 2014**.

All Beacon Grants will be assessed in a single competitive round. **First Stage Applications for Beacon Grants** need to be submitted before the end of **June 2008** and Full Applications by the end of November 2008. The successful Beacon Grants will be announced in March 2009.

**FFI:** call the Changing Spaces Advice Line on **0845 3 671 671** or visit

[www.localfoodgrants.org](http://www.localfoodgrants.org)

### **Community Sustainable Energy Programme (CSEP)**

The CSEP is an open grants programme being managed by the Building Research Establishment (BRE), on behalf of the Big Lottery Fund's "Changing Spaces" Programme. BRE carries out research, consultancy, training and testing to help create better buildings and communities. Not for profit organisations such as community groups, charities, schools, colleges and faith groups, etc are being invited to apply for funding to install renewable energy technologies (such as wind turbines and solar panels) and energy saving measures (such as roof and cavity wall insulation). Under the new Community Sustainable Energy programme £8 million will be available for the installation of microgeneration technologies and energy efficiency measures (Capital grants) and £1 million for Project Development grants. Capital grants will be awarded on a competitive basis at quarterly selection panel meetings. Project development grants (for studies investigating the feasibility of installing any combination of the technologies) will be awarded on a first-come first-served basis until all funds are spent. The maximum Capital grant available is £50,000 or 50% of the project costs. The maximum Project Development grant is £5,000 or 75 per cent of the study cost – whichever is lower.

**FFI:** call the Changing Spaces helpline on **0845 3 671 671**, email: [info@communitysustainable.org.uk](mailto:info@communitysustainable.org.uk), or visit: [www.communitysustainable.org.uk](http://www.communitysustainable.org.uk)

### **Futurebuilders England**

Futurebuilders England offers support and investment to third sector organisations to enable them to deliver public services. A combination of loans, grants and professional support are offered to build the capacity of these organisations. Organisations eligible for investments include charities, social enterprises, community interest companies, voluntary groups and community organisations. Investment packages are available to small, medium and large organisations working to improve public services such as community cohesion, health, education and learning, waste and recycling, sport and leisure and the arts, as well as social enterprises.

There is no maximum level of funding that organisations can apply for; however, the minimum level of support offered is £50,000. To be eligible, organisations must be willing to take on a loan as part of the investment and use the investment to develop services a public body will purchase through contracts or fees. Applications can be submitted at any time. You will hear from Futurebuilders within 2 weeks of submitting an application form.

**FFI:** call the enquiry line on **0191 261 5200**, email: [info@futurebuilders-england.org.uk](mailto:info@futurebuilders-england.org.uk) or visit [www.futurebuilders-england.org.uk](http://www.futurebuilders-england.org.uk)

### **Paul Hamlyn Foundation Education and Learning Open Grants Scheme**

The Paul Hamlyn Foundation is currently accepting applications under its Education and Learning programme. The Foundation is looking to fund projects that promote innovation and change in the areas of supplementary schooling and tackling school exclusion and truancy. Eligible organisations that can apply for funding include charities, local authorities, individual pre-schools, schools, out-of-school clubs, supplementary schools, colleges and youth clubs if they demonstrate benefits to the wider community and include partnership working that will result in increasing access to education and learning to all communities and age groups. The costs that can be covered by the Foundation's grants include running costs such as staff salaries and overheads such as stationery, rent, rates and utilities. There is no minimum or maximum size of grant that organisation's can apply for but the average size grant awarded in 2006 -07 was £19,300. Applications can be made at any time.

**FFI:** call **020 7227 3500**, email: [information@phf.org.uk](mailto:information@phf.org.uk) , or visit: [www.phf.org.uk](http://www.phf.org.uk)

### **Social Enterprise Investment Fund (SEIF)**

The Department of Health (DOH) has announced that the second call for proposals through the Social Enterprise Investment Fund (SEIF) is now open for applications. Under the second call a total of £11m capital and £6m revenue funding will be made available to stimulate and encourage the start up and development of social enterprises in the health and social care sector. This could include women's refuges, migraine clinics and exercise programmes for the elderly, which take account of and address the needs of a wide range of patients and services users, particularly the most vulnerable and excluded. The **closing date** for applications is the **31st July 2008**.

**FFI:** visit [www.dh.gov.uk](http://www.dh.gov.uk) and click on 'managing your organisation', then 'commissioning', then 'social enterprise'; or email: [socialenterprisefund@dh.gsi.gov.uk](mailto:socialenterprisefund@dh.gsi.gov.uk)

### **Tesco Charity Trust Community Awards**

Community and voluntary groups whose core work is supporting children's welfare or education, elderly people and people with disabilities can apply for grants of between **£1,000 and £5,000** through the Tesco Charity's Community Awards. The Tesco Charity Trust has been in existence since 1987 and aims to provide approximately £600,000 in grants each year. Applications are considered in two rounds. Organisations supporting children's welfare and children's educational projects, including special needs schools need to apply by the **31st January each year**. Organisations supporting elderly people and people with disabilities need to apply by the **30th June 2008**.

**FFI:** call **01992 646768**, visit: [www.tescocorporate.com](http://www.tescocorporate.com)

Or **write to:** Tesco Charity Trust, Tesco House, Delamare Road, Cheshunt, Hertfordshire EN8 9SL